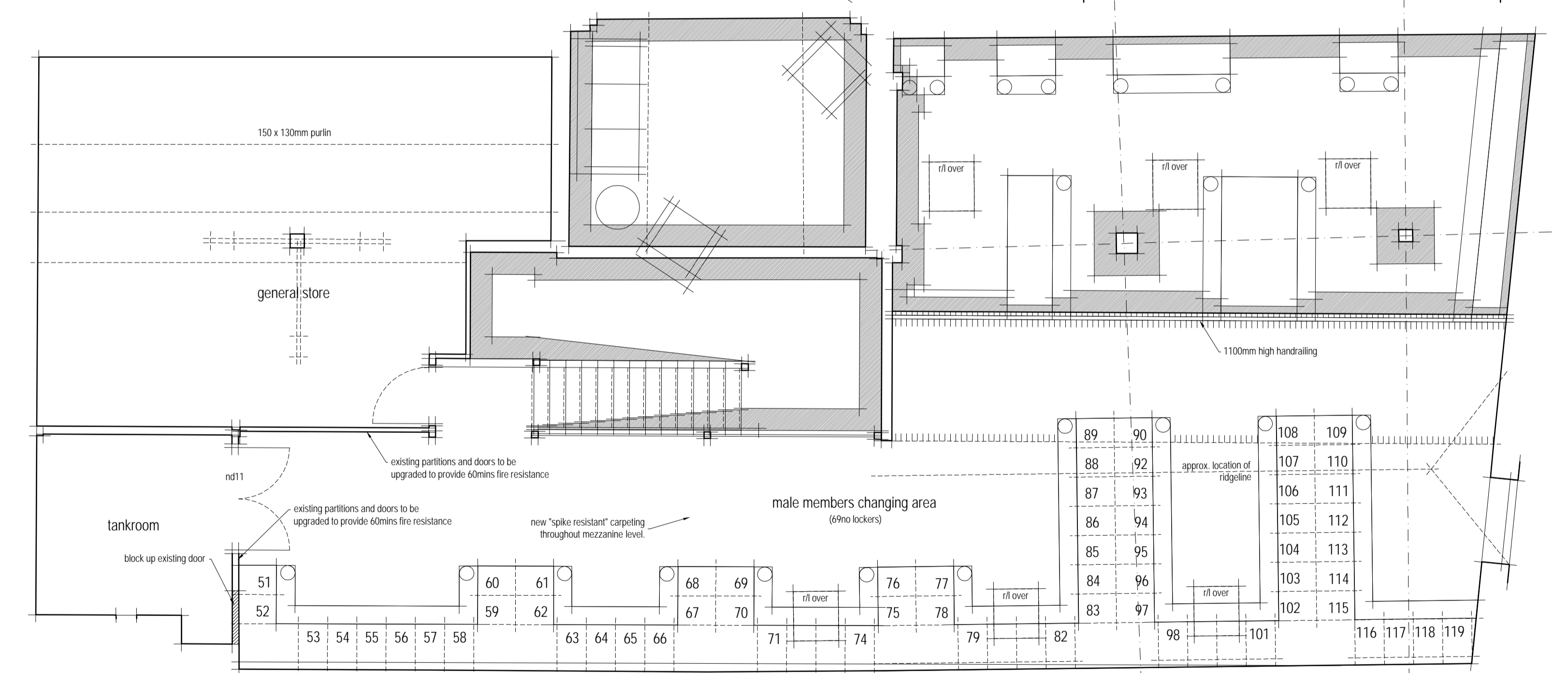
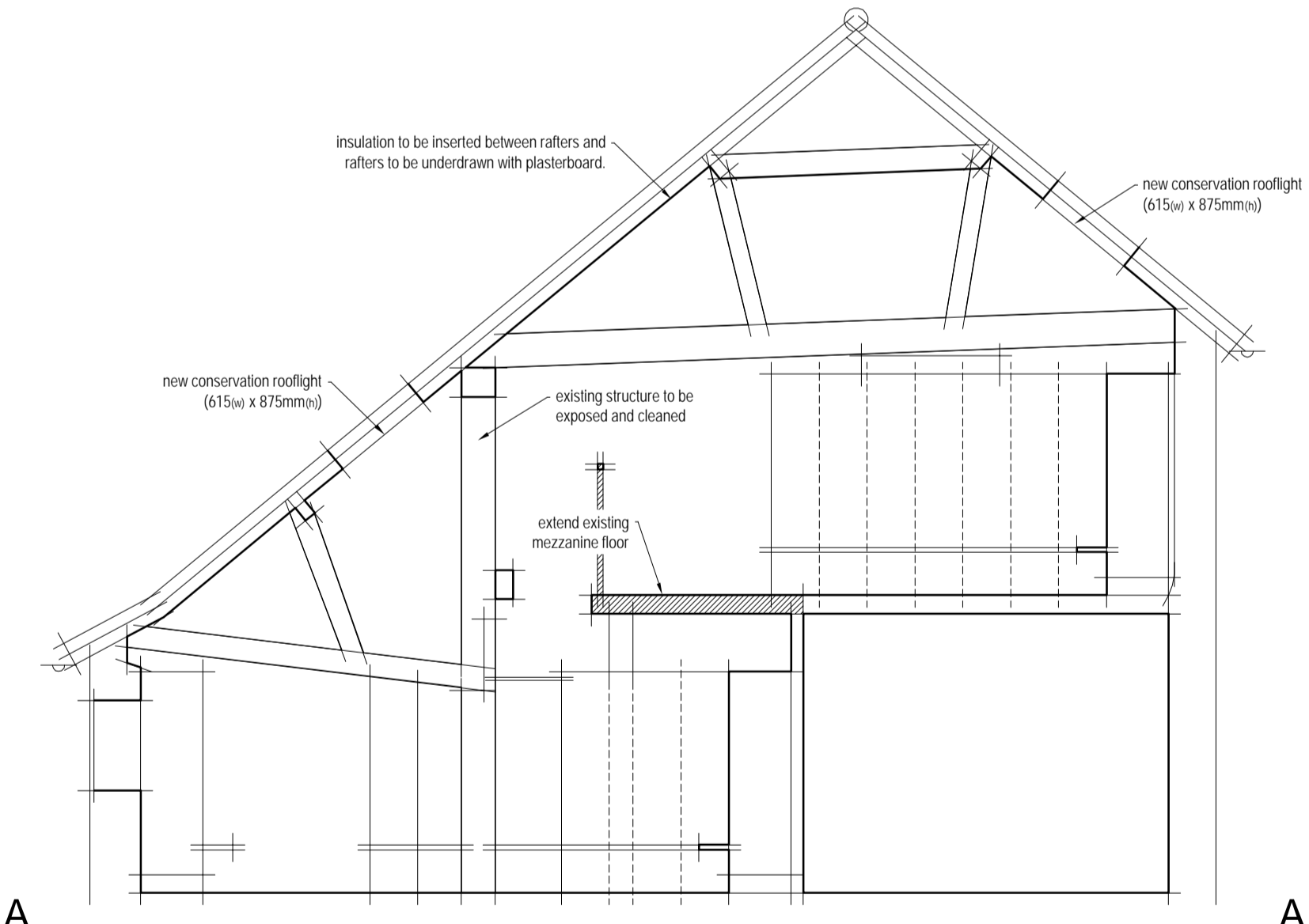


GROUND FLOOR PLAN



FIRST FLOOR PLAN

NOTES / REVISIONS

NOTE: THIS DRAWING MUST NOT BE SCALED.
 ALL DIMENSIONS TO BE CHECKED ON SITE BY THE CONTRACTOR AND ANY DISCREPANCIES ARE TO BE REPORTED BACK TO THE ARCHITECTURAL BEFORE WORK COMMENCES.

revision #1: male changing area, we arrangement revised to accommodate client changes; first floor 'store' revised to 'tankroom' following comments by m&e engineers; doors to 'tankroom' added; locker provision to first floor area revised; notes revised generally.
 28th november 2009 - mwc

no:	Revision	Date:	
architecture & design services ltd.			
PROJECT:	Relubrication Canons Brook Golf Club Elizabeth Way Harlow Essex CM19 5BE		
DRAWING:	PROPOSED Floor Plans & Indicative Sections		
DRAWN BY:	mwc	CHECKED:	mwc
DATE:	SEPTEMBER 2009		
SCALE:	1/50		
DRAWING NUMBER:	08/040/A/003A		
	Pamdon Mill, Harlow, Essex, CM20 2HP		